



产品手册

PRODUCTS SELECTION

XPOMATPOH 1511 Prep

XPOMATPOH 1511 Prep



Simple and flexible preparation and purification

More efficient liquid chromatography solutions

Meet more application scenarios and analysis needs

- A true fully automated preparation level system
- From sampling to distillate collection, from operation to analysis
- Solve various semi preparation and preparation applications
- Support for expansion into high-pressure 2D systems
- More efficient solution to preparation problems

Infusion system suitable for high-pressure preparation

- Wide flow range 0~150mL/min
- Pressure range 0~400Bar(@0~50 mL/min)
- Supports up to four solvents for better flexibility, suitable for various application scenarios



Model	Performance Parameter	Weight	size
P12	Constant flow isocratic pump (10500 psi)	16 Kg	550 mm(D)× 396 mm(W)× 196 mm(H)
P20	Binary pump (10500 PSI)	19 Kg	550 mm(D)× 396 mm(W)× 196 mm(H)
P22	Binary pump (10500 PSI, 2CH degassing unit)	24 Kg	550 mm(D)× 396 mm(W)× 196 mm(H)
P40	Quaternary pump (10500 PSI, 4CH degassing unit)	18 Kg	550 mm(D)× 396 mm(W)× 196 mm(H)
P60	Dual ternary gradient pump (10500 PSI, 6CH degassing unit, ternary gradient valve)	24 Kg	550 mm(D)× 396 mm(W)× 196 mm(H)
UP25	Binary pump (16000 PSI, 2CH degassing unit, ternary gradient valve)	24 Kg	550 mm(D)× 396 mm(W)× 196 mm(H)
P10	Isocratic pump 10500 PSI / >72Mpa # Small volume	8 Kg	320 mm(D)× 135 mm(W)× 147mm(H)
P42	Quaternary pump 10500 PSI / >72Mpa、5CH degasser	18 Kg	550 mm(D)× 396 mm(W)× 196 mm(H)

Large volume injection and stable separation

- Wide flow range 0~150mL/min
- Pressure range 0~400Bar(@0~50 mL/min)
- Supports up to four solvents for better flexibility, suitable for various application scenarios



Model	Performance Parameter	Weight	size
A10	Auto sampler, 9000 PSI	22 Kg	550 mm(D)× 396 mm(W)× 281 mm(H)
A20	Auto sampler, 18000 PSI	22 Kg	550 mm(D)× 396 mm(W)× 281 mm(H)
A50	Auto sampler, 9000 PSI, high injection volume till 1ml	22 Kg	550 mm(D)× 396 mm(W)× 281 mm(H)
A60	Auto sampler, 9000 PSI, Integral-Loop	23 Kg	550 mm(D)× 396 mm(W)× 281 mm(H)
A65	Auto sampler, 18000 PSI, Integral-Loop	23 Kg	550 mm(D)× 396 mm(W)× 281 mm(H)
Manual injector	Manual injector With: 7725i, 20ul loop, valve holder, syringe.	0.5Kg	130mm(D)×185 (W) ×95mm(H)
A10C	Auto sample Inhalation 9000PSI, Standard # with cooling function	26 Kg	718 mm(D)×396 mm(W)× 281 mm(H)
A20C	Auto sample Inhalation18000PSI # cooling function	26 Kg	718 mm(D)×396 mm(W)× 281 mm(H)
A50C	Auto sample Inhalation9000 PSI, Mass injection 1mL # cooling function	26 Kg	718 mm(D)×396 mm(W)× 281 mm(H)
A60C	Auto sampler Integral-Loop 9000 PSI, 4X sample tray, 100uL quantitative pump # cooling function	24 Kg	718 mm(D)×396 mm(W)× 281 mm(H)
A65C	Auto sampler Integral-Loop Integral-Loop, 4X sample tray, 100uL quantitative pump # cooling function	24 Kg	718 mm(D)×396 mm(W)× 281 mm(H)

Efficient separation and column switching function

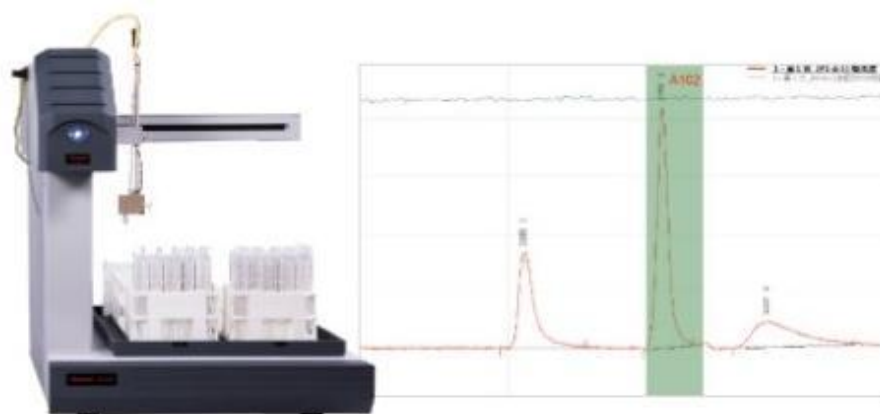
- Large capacity column incubator, supporting 50mm ID preparation of chromatographic columns
- Efficient separation, supporting mg~g level sample loading
- The patented forced air circulation design makes the temperature field more uniform
- Optional dual valve switching, achieving automatic desalination and impurity removal function of dual chromatography columns



Model	Performance Parameter	Weight	size
C10	Column oven Ambient+5°C-85°C	15 Kg	543 mm(D)× 150 mm(W)× 475 mm(H)
C15	Column oven Ambient+5°C-85°C, 0.003 inch tubing	15 Kg	543 mm(D)× 150 mm(W)× 475 mm(H)
C12	Column oven 4°C-85°C	17 Kg	543 mm(D)× 150 mm(W)× 475 mm(H)
C16	Column oven 4°C-85°C, 0.003 inch tubing	17 Kg	543 mm(D)× 150 mm(W)× 475 mm(H)

Implement a fully automatic fraction collection system

- Automatic injection and automatic fraction collection
- Automatic peak threshold, slope, and area collection condition determination
- Multiple sample holder specifications selection (30mm, 16mm,



Excellent detection performance for more reliable results

UV visible detector

- Automatic switching of optical path, providing a wavelength range of 190~900nm
- Up to 100Hz data acquisition rate, even extremely narrow peaks can be easily obtained
- The linear range of 2.5AU is equally adept for high concentration samples
- Standard wavelength time program, wavelength switching detection
- The module is easy to maintain, the light source replacement is convenient, and multiple flow pools can be selected



Model	Performance Parameter	Weight	size
D08	UV-vis detector 190nm-640nm	15 Kg	550 mm(D)× 396 mm(W)× 196 mm(H)
D10	UV VIS Detector 190nm-900nm	15 Kg	550 mm(D)× 396 mm(W)× 196 mm(H)
D15	UV VIS Detector 190nm-900nm	15 Kg	550 mm(D)× 396 mm(W)× 196 mm(H)
D20	Diode Array Detector 190nm-640nm	18 Kg	550 mm(D)× 396 mm(W)× 196 mm(H)
D22	Diode-array Detector 1024 pixels 190nm-800nm	18 Kg	550 mm(D)× 396 mm(W)× 196 mm(H)
D23	Diode-array Detector 1024 pixels 190nm-640nm	18 Kg	550 mm(D)× 396 mm(W)× 196 mm(H)
D24	Diode-array Detector 1024 pixels 190nm-800nm	18 Kg	550 mm(D)× 396 mm(W)× 196 mm(H)
D25	Diode Array Detector 190nm-640nm Variable slit	18 Kg	550 mm(D)× 396 mm(W)× 196 mm(H)



Contact

UVTech

Add: 2nd Floor, Building 3, No. 1 Chaoqian Rd, Changping, Beijing, China PRC.

TEL:18613365565

MAIL: info@uvtech-cc.com